

Contents

1 Executive Summary 1

- Defining Disability 4
- Disclosing a Psychiatric Disability to an Employer 8
- Accommodating Qualified Employees With Disabilities 9
- The ADA's Direct Threat Standard and Psychiatric Disability 11
- Health Insurance for People With Psychiatric Disabilities 11
- Relevant Federal Agencies' Activities 12
- Implications for Technical Assistance and Research 13

2 The ADA and People With Disabilities: An Overview 19

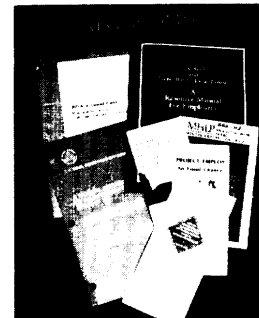
- The ADA and Its Legal Antecedents 19
- The Role of People With Disabilities 28
- Summary and Conclusions 36
- Chapter preferences 37

3 How the ADA and Research Define Psychiatric Disabilities 41

- The ADA's Definition of Disability 44
- Research Characterizations of Psychiatric Disabilities 49
- Summary and Conclusions 60
- Chapter preferences 61

4 The ADA's Tools for Effecting Employment 65

- Employment of People With Psychiatric Disabilities: Requirements Under the ADA 65
- Special Concerns Raised by the ADA 84
- Summary and Conclusions 90
- Chapter 4 References 91



5 Relevant Federal Agencies’ Activities 97

U.S. Equal Employment Opportunity
Commission 100
National Institute on Disability and Rehabilitation
Research 105
Center for Mental Health Services **106**
National Institute of Mental Health 109
President’s Committee on the Employment of People
With Disabilities 113
Summary and Conclusions 114
Chapter 5 References 115
Appendix 5A: Survey of EEOC Field Offices About
Psychiatric Disabilities and the ADA 117

APPENDIXES

A Workshop Participants 119

B Acknowledgments 121

C List of Contractor Documents 124

D Acronyms and Glossary of Terms 125