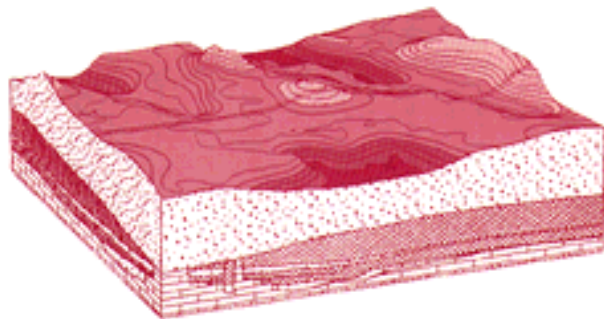


*Western Surface Mine Permitting and  
Reclamation*

June 1986

NTIS order #PB87-100350

**Western  
Surface Mine  
Permitting and  
Reclamation**



CONGRESS OF THE UNITED STATES  
Office of Technology Assessment  
Washington, D.C. 20540

Recommended Citation:

U.S. Congress, Office of Technology Assessment, *Western Surface Mine Permitting and Reclamation*, OTA-E-279 (Washington, DC: U.S. Government Printing Office, June 1986).

Library of Congress Catalog Card Number 86-600506

For sale by the Superintendent of Documents  
U.S. Government Printing Office, Washington, DC 20402

# Foreword

This report responds to a request from the House Committee on Interior and Insular Affairs to assess the ability of current mining and reclamation technologies and methodologies, and of Federal programs and policies, to meet the statutory mandates for environmental protection in reclaiming the surface of Western coal mined lands.

OTA examined the state of development of Western reclamation technologies and methodologies, the adequacy and uses of baseline and monitoring data on mined land reclamation, the reliability of analytical techniques used to predict the impacts of mining and evaluate the success of reclamation practices, and the encouragement given to research and to the development and use of innovative permitting and reclamation technologies. The study also examines the role and effectiveness of lease stipulations and permit conditions as means of imposing technological or methodological requirements for environmental protection and resolving uncertainties in mining and reclamation situations. Technical and policy options for resolving uncertainties about, and for improving the prospects for, successful reclamation on Western Federal lands, including research and development needs, are discussed.

OTA received substantial help from many organizations and individuals in the course of this study. We would like to thank the project's contractors, who prepared the technical background analyses; the project's advisory panel, who provided guidance and extensive critical reviews; and the many additional reviewers who gave their time to ensure the accuracy and objectivity of this report.



JOHN H. GIBBONS  
*Director*

# Western Surface Mine Permitting and Reclamation Advisory Panel

James J. Stukel, Chairman  
Vice Chancellor for Research and Graduate Dean  
University of Illinois at Chicago

George Davis  
Hydrogeologist  
Silver Spring, MD

Robert Flagg\*  
Manager, Technical and Research Services  
Mining and Reclamation Council of America

Tim Gallagher  
Assistant Administrator  
Montana Department of Natural Resources  
and Conservation

L. Thomas Galloway  
Attorney  
Galloway & Greenberg  
Washington, DC

Sheridan Glen  
Assistant Vice President  
Arch Mineral Corp.

Nick Golder  
Rancher  
Forsyth, MT

Pat Holderness  
Rancher  
Hayden, CO

Carolyn Johnson  
Environmental Consultant  
Denver, CO

Frank Kottlowski  
Director  
New Mexico Bureau of Mines and  
Mineral Resources

George Land  
Director, Technology Assessment  
AMAX Coal Co.

Cyrus McKell  
Vice President, Research  
Native Plants, Inc.

Lyle Randen  
Environmental Manager  
Thunder Basin Coal Co.

Roger Shaffer  
Administrator, Land Quality Division  
Wyoming Department of Environmental Quality

Patrick Sweeney  
Regional Director  
Western Organization of Resource Councils

Lauri M. Zell\*\*  
Director, Government Affairs  
Mining and Reclamation Council of America

## *Ex officio:*

Marlene Berg  
Fish and Wildlife Biologist  
U.S. Fish and Wildlife Service

Dan Kimball  
Environmental Protection Specialist  
National Park Service

Al Klein  
Administrator, Western Technical Center  
Office of Surface Mining

---

\*Served as a panelist after August 1985.

\*\*Served as a panelist until August 1985.

NOTE: OTA appreciates and is grateful for the valuable assistance and thoughtful critiques provided by the advisory panel members. The panel does not, however, necessarily approve, disapprove, or endorse this report. OTA assumes full responsibility for the report and the accuracy of its contents.

## OTA Project Staff

Lionel S. Johns, *Assistant Director, OTA  
Energy, Materials, and International Security Division*

Peter D. Blair, *Energy and Materials Program Manager*

Richard E. Rowberg, *Energy and Materials Program Manager (until December 1985)*

Jenifer Robison, *Project Director*

Martha G. Finnemore, *Baseline and Monitoring Data  
Standards for Reclamation Success  
Lease Stipulations*

Linda K. Wackwitz, *Senior Technical Analyst*

### Administrative Staff

Lillian Chapman      Edna Saunders      Sharon Scott

### Contractors

Jane Bunin

Cedar Creek Associates

James P. Walsh & Associates

Western Resource Development Corp.

Western Water Consultants

### Other OTA contributors

Steven E. Plotkin

# Acknowledgments

OTA thanks the following groups who provided information or reviewed part or all of this report or the background reports:

Agricultural Research Service, Northern Great Plains Research Center  
American Mining Congress  
Anaconda Minerals Co.  
Atlantic Richfield Co.  
Brigham Young University, Department of Botany and Range Science  
Colorado Department of Natural Resources, Mined Land Reclamation Division  
Colorado Division of Wildlife  
Colorado State University, Department of Range Science  
Colorado Yampa Coal Co.  
Colowyo Coal Co.  
Consolidation Coal  
Cordero Mine  
Dakota Resource Council  
Environmental Policy Institute  
Fort Union Mine Partnership  
Getty Oil Co.  
High Plains Grassland Research Station  
Intermountain Forest and Range Experiment Station  
Kaiser Coal Co.  
Kerr Coal Co.  
Kiewit Mining & Engineering Co.  
Knife River Coal Co.  
Montana Department of Fish, Wildlife and Parks  
Montana Department of State Lands  
National Wildlife Federation  
NERCO, Inc.  
New Mexico Department of Energy and Minerals, Mining and Minerals Division

New Mexico Department of Game and Fish  
North American Coal Corp.  
North Dakota Game and Fish Department  
North Dakota Public Service Commission  
North Dakota State University, Land Reclamation Research Center  
Northern Plains Resource Council  
Peabody Coal Co.  
Plant Materials Center, Bridger, Montana  
Powder River Basin Resource Council  
Sierra Club  
Soil Conservation Service  
Sunbelt Mining Co.  
Trapper Mining Co.  
University of Wyoming, Range Management Department  
Upper Colorado Environmental Plant Center  
U.S. Department of Agriculture, Forest Service  
U.S. Department of the Interior:  
Bureau of Land Management  
Fish and Wildlife Service  
Office of Surface Mining  
U.S. Geological Survey  
Utah International, Inc.  
Utah State University, Institute for Land Rehabilitation  
Western Energy Co.  
Western Interstate Energy Board  
Western Regional Council  
Western Soil and Overburden Task Force  
W.R. Grace & Co.  
Wyoming Department of Environmental Quality  
Wyoming Game and Fish Department

## Related OTA Reports

- *Technologies To Benefit Agriculture and Wildlife*  
OTA-BP-F-34; May 1985. GPO stock #052-003-00996-O.
- *Protecting the Nation's Groundwater From Contamination*  
OTA-O-233; October 1984. GPO stock #052-003-00966-8.
- *Environment/ Protection in the Federal Coal Leasing Program*  
OTA-E-237; May 1984. GPO stock #052 -O03-O0954-4.
- *Wetlands: Their Use and Regulation*  
OTA-O-206; March 1984. GPO stock #052 -O03-O0944-7.
- *Water-Related Technologies for Sustainable Agriculture in U.S. Arid and Semi-arid Lands*  
OTA-F-212; October 1983. GPO stock #052 -O03-O0930-7.
- *U.S. Crop/and and Rangeland Productivity*  
OTA-F-166; August 1982. NTIS order #PB 83-125013.
- *Development and Production Potential of Federal Coal Leases*  
OTA-M-1 50; December 1981. NTIS order #PB 82-149378.
- *The Direct Use of Coal*  
OTA-E-86; April 1979. NTIS order #PB 295797.
- *Management of Fuel and Non-Fue/ Minerals on Federal Lands*  
OTA-M-88; April 1979. NTIS order #PB 295788.