

## POPULATION GENETICS

## A portrait of yeast

The importance of yeast for fermentation has shaped our shared history with this organism for thousands of years. By analysing the genomes of dozens of isolates of domestic and wild yeast two studies now document the effect of evolutionary processes on the yeast genome — the result is not only a detailed polymorphism map for this medically and commercially important group of organisms, but also evidence of the influence of humans on the genome structure of domesticated yeast.

To investigate the poorly understood relationship between phenotypic adaptation and genome variation, Gianni Liti and colleagues sequenced the genomes of *Saccharomyces cerevisiae* from worldwide locations and compared

them to those of the closely related but non-domesticated wild species *Saccharomyces paradoxus*.

This genome-wide survey provides a detailed picture of variation in gene content between >70 strains, as well as genomic variants such as new ORFs and copy number and insertion–deletion polymorphisms. The 35 *S. paradoxus* isolates fall into three phylogenetically distinct populations, as inferred from SNP-based neighbour joining trees; by contrast, only 20 of the 36 sampled *S. cerevisiae* strains fall into five 'pure' lineages — the others have mosaic genomes, perhaps a result of lineage mixing caused by human activity. In addition, most strains of *S. cerevisiae* have a higher phenotypic variance than *S. paradoxus* strains, and so probably they occupy a larger ecological niche. Although these data can be used to infer a more detailed phylogenetic history of yeast strains, they also serve as a resource for fine mapping interesting phenotypic differences (the *Saccharomyces Genome Resequencing Project*).

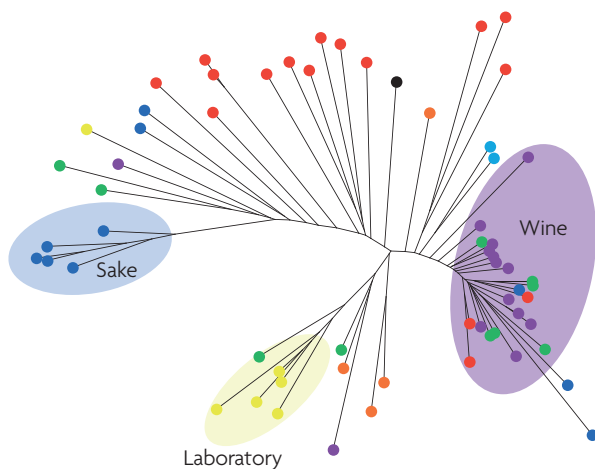
Another example of the contribution of large-scale genotyping technologies to evolutionary functional genomics is provided by a second paper; here, the authors define the polymorphism structure of 63 *S. cerevisiae* strains by using whole-genome tiling microarrays. Over 100,000 segregating SNPs were used to determine, for the first time, several population genetic parameters, including linkage disequilibrium structure and patterns of deletion

polymorphisms across geographically and ecologically dispersed samples. Because segregating sites are located every ~100 bp, the SNP map is dense enough to be used as a resource for genome-wide association studies (the *YSB database*).

The phylogenetic relationships inferred from the polymorphic sites support related conclusions by Liti *et al.* that wine making, sake making and laboratory strains fall into three separate clusters (see the figure), suggesting that they arose from three distinct domestication events. By contrast, clinical isolates have arisen multiple times, suggesting that many non-clinical strains can opportunistically acquire the ability to colonize human tissues.

Although much information exists on the interspecies variation between *Saccharomyces* and other species within the same phylum, the polymorphism maps developed by these two studies offer the first opportunity to study phenotype–genotype correlations within *Saccharomyces* itself.

Tanita Casci



Neighbour joining tree of 63 *Saccharomyces cerevisiae* strains. Image is modified, with permission, from Schacherer, J. *et al.* *Nature* (doi:10.1038/nature07670) © (2009) Macmillan Publishers Ltd. All rights reserved.

**ORIGINAL RESEARCH PAPERS** Liti, G. & Carter, D. M. *et al.* Population genomics of domestic and wild yeasts. *Nature* 11 Feb 2009 (doi:10.1038/nature07743) | Schacherer, J. & Shapiro, J. A. *et al.* Comprehensive polymorphism survey elucidates population structure of *Saccharomyces cerevisiae*. *Nature* 11 Feb 2009 (doi:10.1038/nature07670).

**WEBSITES**

Yeast SNPs Browser (YSB) database: <http://gbrowse.princeton.edu/yeastSNP>  
*Saccharomyces Genome Resequencing Project*: [www.sanger.ac.uk/Teams/Team118/sgrp](http://www.sanger.ac.uk/Teams/Team118/sgrp)