



**CEHI**

Castries, St. Lucia

# About CEHI

## Mission and Vision



- “...to provide leadership to our Member States in order to improve and support policy development decisions”
- “...centre of Excellence for Environmental Health Policy and Management for the Caribbean...pro-active and customer oriented.”
- 16 member states
- CARICOM

# 16 member states



[cehi.org.lc/](http://cehi.org.lc/)

Anguilla; Antigua & Barbuda; Barbados; Belize; British Virgin Islands; Dominica; Grenada; Guyana; Jamaica; Montserrat; St. Kitts & Nevis; St. Lucia; St. Vincent & the Grenadines; Trinidad & Tobago; Turks & Caicos

# About St. Lucia



# Some facts

- Area: 238 sq. mi.
- Main colonizers: Britain and France  
1979 independence
- Language: English, Creole
- 90% African descent, 6% mixed,  
3% East Indian, 1% European
- Majority Roman Catholic
- Bananas, Tourism
- \$2.7 EC= \$1 USD

<http://www.state.gov/r/pa/ei/bgn/2344.htm>



# Some issues

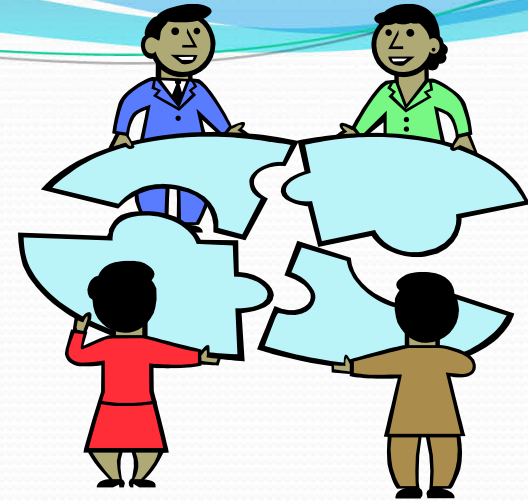


- Appropriation of coastal property
- Coastal hotels and water pollution
- All-inclusive resorts v. supporting local commerce
- Appropriation of land to banana farming v. tourism
- Making recycling cost-effective

# About me

- Major in Sociology
- Concentration in Environmental Studies
- Extracurriculars and independent work on community participation in environmental movement
- Plan to work in environmental field after graduation
- Helped found em[POWER], a non-profit focused on waste-picking communities in unregulated dumps

# Connections



- Visited Deglos landfill, spoke to a worker on plans to reuse shredded tires and treat leachate
- St. Lucia proposal for waste-to-energy in landfill
- Waste-to-energy on banana farms
- Useful articles from staff in charge of energy projects

# My work at CEHI



- Summaries
- Presentations
- Briefings
- Database entry and results charts
- Some English/Spanish translation
- Areas:
  - Integrated Watershed Resources Management
  - 5<sup>th</sup> Biennial Caribbean Environmental Forum
  - Cartagena Convention and LBS Protocol (Land Based Sources of Marine Pollution)
  - NW Coastal Project in St. Lucia



# Logistics

- Apartment selection
- Commuting
- Grocery shopping



Public Transportation - Bus © Tropical Web Shop Inc.

# Challenges

## In Work

Challenges	Solutions
Feedback	Ask!
Work slows down/you get stuck	Ask! + Take initiative!



## Outside of work

Challenges	Solutions
Getting around	Ask! + Explore!
Staying connected	Ask! + Turn off that laptop and go somewhere!



# Daily life



# Mornings



# Evenings



# Fun

CEHI employees showed me around on weekends!

- Ziplining through the rainforest
- Snorkeling
- Marigot Bay café
- Fish Fry in Anse-La-Raye
- Friday night in Gros Islet
- Pigeon Point
- Dinner in Rodney Bay
- Carnival fête and parade
- And of course, beaches 😊





# Sudden rain!



# Taking cover



# Words of advice

- Don't sweat the small stuff
- Your cultural common sense is not always applicable...when in doubt, ask!
- Take all opportunities to converse and socialize w/employees (lunch time, coffee)
- Talk about yourself!

# Improvise

