

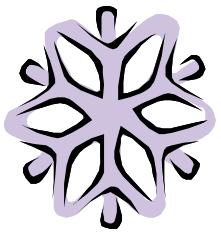


# The Bugle

A service of the Butler Committee



Winter 2006  
Jane Phillips, Editor



## Happy Winter Butler Residents!

*The weather outside is frightful, but there are still plenty of fun things going on at Butler! Be sure to check them all out and get involved if you can!*



## In this issue:

Chinese New Year party

Storage container info

New Butler webpage

Important contacts

Listserv signup info

Gardening information

*...and much more!*

## Come to Butler Committee Meetings!



**When:** First Tuesday of every month, 9:30 pm

**Where:** Butler Community Room

New positions are open on the Butler committee:

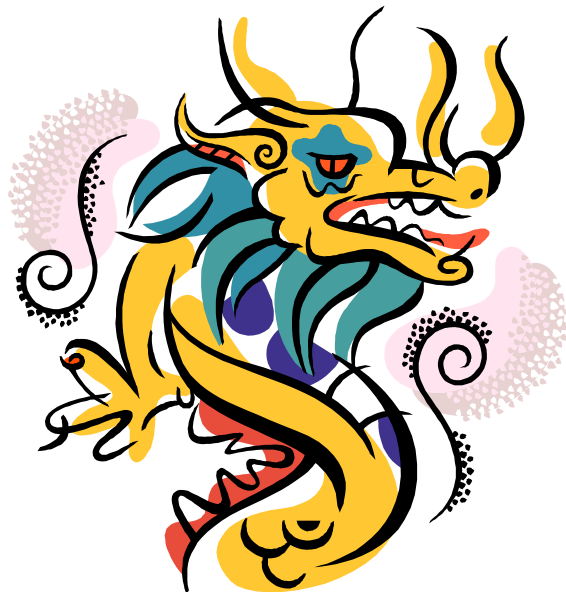
- Community Room Reserver
- Treasurer
- Gardening Co-coordinator
- GSG Representative

Join the Butler Committee for event planning, updates, and discussions concerning Butler!



Newcomers to Butler are welcome. Get yourself acquainted with the issues concerning your apartment complex!

# Chinese New Year Celebration!



Come and welcome the year of the dog by enjoying a festive atmosphere, Chinese food buffet and drinks

**Thursday, February 9**  
**8:00 - 10:00 pm**  
**Butler Community Room**

*All members of the graduate student community and their guests are welcome*  
*Sponsored by the Butler Committee and the GSG*

## Moving in or out?

**Dollies and ladders** are available for you to borrow.

Please Contact **Butler Dolly Coordinator: Rodrigo Casassus** at [rcasassus@avr.com.ar](mailto:rcasassus@avr.com.ar) **609-252-9150** to borrow equipment.

*Please notify at least 24 hrs in advance and provide some token of collateral, such as PU ID or license.*



## Contact info

**Clogged drain, broken heater, or maintenance issues?**

Dwight McEwen, Butler Superintendent, x8-1421

**Lawn, sidewalks, or other outdoor concerns?**

Jim Consolloy, Grounds, x8-3505

**General concerns about life in Butler?**

Lisa DePaul, Asst. Director of Grad Housing, x8-3460,

F. Joy Montero, Associate Dean of Student Affairs, x8-3028,

The Butler Committee, [butlerap@princeton.edu](mailto:butlerap@princeton.edu)

**Need help with the kids?**

Affordable insurance: NJ kidcare, (800) 701-0710 or <http://www.njfamilycare.org>

Care & immunizations for uninsured kids: *Well Child Clinic*, (609) 497-4900 or *Healthstart Pediatric Clinic* at Princeton Medical Center, (609) 497-4240.

# New Butler Webpage

Butler Apartments has a new webpage, brought to you by your friendly neighborhood webmaster, Juan Melli, and the rest of the Butler Committee!

<http://www.princeton.edu/~butlerap/>

Be sure to visit the site for useful Butler resources, and don't forget to add your suggestions on how to improve life in Butler!



We have a **Butler Pet-sitting Co-Op** - all are welcome to join. If you would like to participate, contact **John Crever** at [johncie@juno.com](mailto:johncie@juno.com). Please

provide John with your name, residence address, phone number and email address. To request a pet-sitter, email John and the list of pet-sitters will be contacted.

## Useful websites



### Butler Events Calendars

<http://www.princeton.edu/~butlerap/calendar>

### Yoga classes at Butler:

<http://www.princeton.edu/~butlerap/yoga.html>

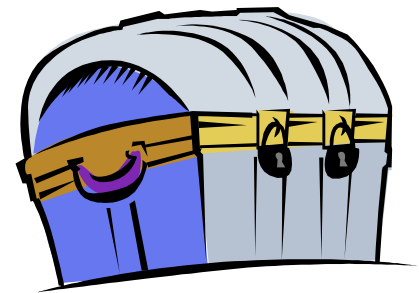
### Butler (Green Line) P-Ride Campus Shuttle

[http://www.gmtma.org/prides\\_green.htm](http://www.gmtma.org/prides_green.htm)

# Butler Storage Sheds Information

The aim of the storage sheds, placed at the rear of every Butler unit, is to de-clutter the Butler Community. Here are some guidelines:

- \* Use your shed to store toys, lawn furniture, garden tools etc.
- \* Do not use the shed to store flammables/ combustibles like propane or BBQ cylinders, solvents, tires, lumber, newspapers or other hazardous materials.
- \* Do not use the shed to store/hold garbage or recyclables.
- \* Do not use the shed as a play structure for your children or as a dog or cat house.



Sheds must remain in the location where they were installed. Please do not remove or relocate the sheds!

*Questions? Contact the University's Customer Service Center at 609-258-8000 or [service@princeton.edu](mailto:service@princeton.edu).*

# Got a Green Thumb?

It's getting to be that time of year again!

Sign up for garden plots at Butler by contacting **Agatha Lenartowicz** ([alenarto@princeton.edu](mailto:alenarto@princeton.edu)), the Butler gardening coordinator.

Fees for plots per year are \$10 for a half plot, \$20 for a full plot. A full plot measures about 15 ft. x 30 ft.



Also, please remember to contribute your kitchen waste to Butler's brand-new **Mantlis Compost-Twin composter**, located adjacent to the community room on the patio.



**Please compost:**

- Vegetable and fruit scraps
- Bread, Rice, Pasta
- Coffee grounds
- Tea bags (without the staple)
- Cornhusks
- Garden clippings

**Please do not compost:**

- Pet droppings
- Meat scraps or bones
- Fish or seafood
- Dairy products or eggshells
- Greasy food or shortening
- Corncobs

<http://www.princeton.edu/~butlerap/gardening.html>

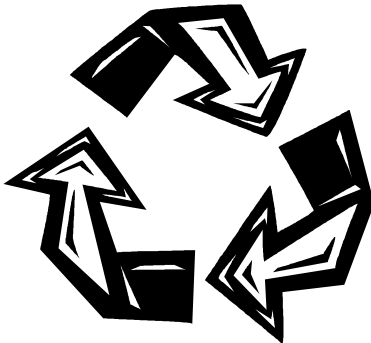
## Recycling in Butler

**Commingled mixed paper**

Brown paper bags, cardboard, colored paper, posters, envelopes, magazines, newspaper, paper back books, phone books

**Glass, metal & plastic - please clean and rinse first!**

Glass bottles & jars, aluminum, steel & tin cans, yogurt containers, plastic soda & water bottles, milk & juice Containers of all kinds, detergent Bottles



**Trash - the following are not recyclable!**

Plastic bags, cigarettes, food, glassware, light bulbs, napkins, **pizza boxes**, paper & plastic utensils, silverware, styrofoam, tin foil, tissues, toys, waxed paper

## Join the Butler Listserves!

To find out more about social events and give your input on the goings-on at Butler, subscribe to the following:



<https://new-lists.princeton.edu/cgi-bin/wa?SUBED1=butler-res&A=1>

## Child care

If you are interested in exchanging babysitting time within our grad school community, join the following mailing list:



**Child Care:**

<https://new-lists.princeton.edu/cgi-bin/wa?SUBED1=childcare&A=1>

After subscribing to the list, you will automatically receive more information about the functioning of the list.