

GSG 2009 Ballot Survey Questions - All Responses

1. The representatives to the GSG Assembly ought to be elected:

Within departments/programs	105
Within divisions	45
At large	16
Hybrid	54
Other or unsure	8
<i>Blank</i>	4
Total responses	<u>232</u>
Total non-blank responses	228

2. The advocacy committee chairs should be elected by the:

GSG Assembly	132
Graduate student body	69
Other or unsure	27
<i>Blank</i>	4
Total responses	<u>232</u>
Total non-blank responses	228

3. Should there be any additional requirements for candidacy in any of the following positions:

3a. GSG Chair

Yes	104
No	106
Unsure	18
<i>Blank</i>	4
Total responses	<u>232</u>
Total non-blank responses	228

3b. Other GSG Executive Officers

Yes	35
No	164
Unsure	29
<i>Blank</i>	4
Total responses	<u>232</u>
Total non-blank responses	228

3c. GSG Advocacy Committee Chairs

Yes	26
No	168
Unsure	33
<i>Blank</i>	5
Total responses	<u>232</u>
Total non-blank responses	227

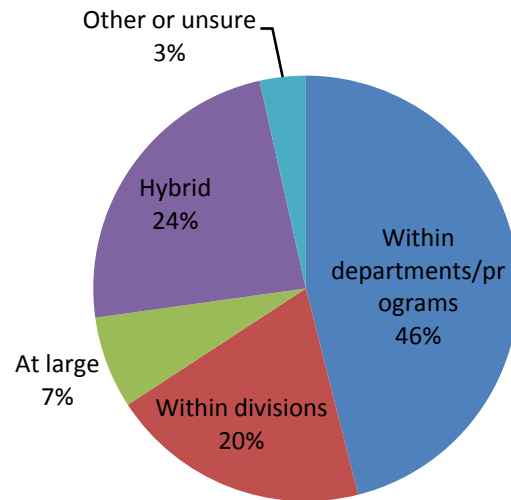
4. Which officers should receive housing priority?

Neither GSG nor Residential Committee officers should get housing priority	43
Only Residential Committee officers should get housing priority	18
Only GSG officers should get housing priority	25
Both GSG and Residential Committee officers should get housing priority	120
Other or unsure	22
<i>Blank</i>	4
Total responses	<u>232</u>
Total non-blank responses	228

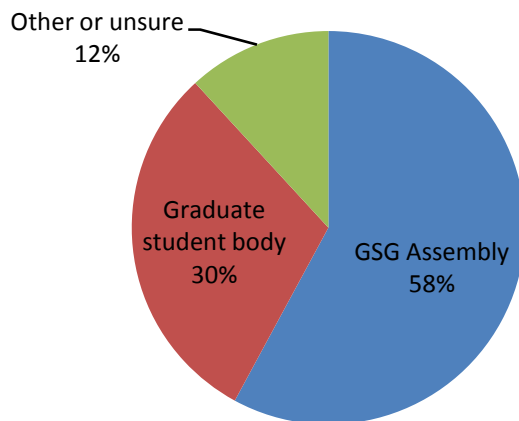
5. What is your program or department?

ANT	7
AOS	3
APC	4
ARC	1
ART	3
AST	6
CEE	9
CHE	6
CHM	6
CLA	0
COM	0
COS	9
EAS	4
ECO	9
EEB	2
ELE	10
ENG	3
FIN	1
FIT	3
GEO	5
GER	0
HIS	27
HOS	5
MAE	8
MAT	7
MOL	18
MUS	1
NES	1
ORF	7
PHI	2
PHY	7
POL	15
POP	1
PPL	4
PSY	5
REL	9
SLA	2
SOC	8
SPO	0
WWS	12
Other	2
<i>Blank</i>	0
Total responses	<hr/> 232
Total non-blank responses	232

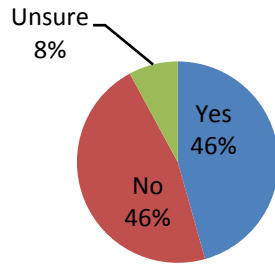
1. The representatives to the GSG Assembly ought to be elected:



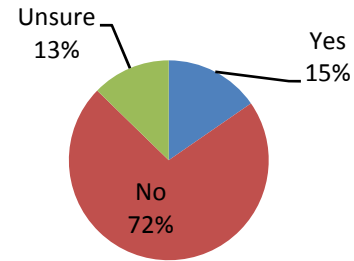
2. The advocacy committee chairs should be elected by the:



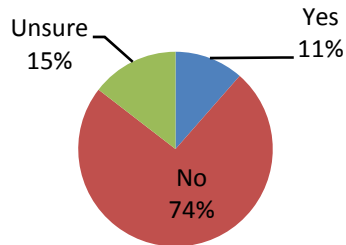
Requirements for 3a. GSG Chair



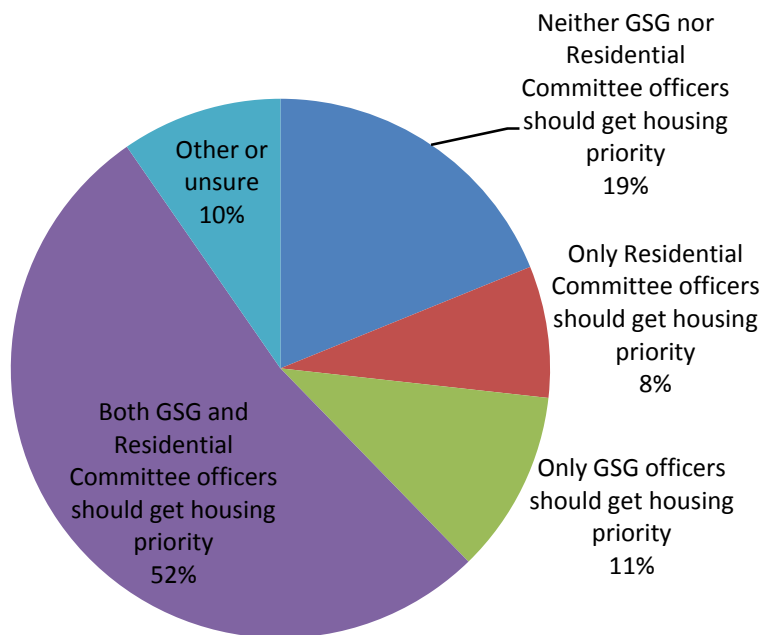
Requirements for 3b. Other GSG Executive Officers



Requirements for 3c. GSG Advocacy Committee Chairs



4. Which officers should receive housing priority?



5. What is your program or department?

