

IRG-C: Integrated Self-Assembled Nanostructures

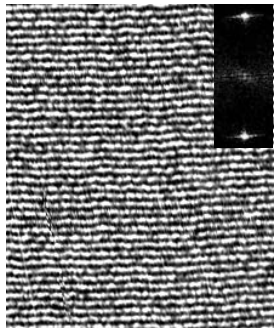


Doug Adamson (PRISM)[•]
 Steve Chou (EE)[•]
 Mikko Haataja (MAE)[•]
 Jamie Link (ChE)[•]
 Lynn Loo (ChE)[•]
 Thanos Panagiotopoulos,
 co-leader (ChE)[•]
 Bob Prud'homme (ChE)[•]
 Rick Register, co-leader (ChE)[•]
 Bill Russel (ChE)[•]

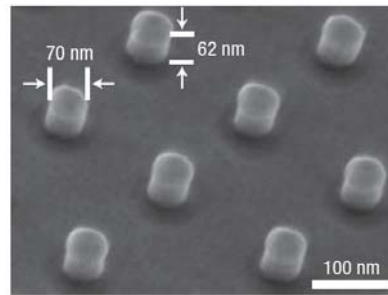
• synthesis
• experiment
• theory/modeling

collaborators:

P.M. Chaikin[•] (NYU), J.P.K. Doye[•] (Oxford), F.G. Fan[•] (Xerox),
 R.P. Hart[•] (Rutgers), A.A. Louis[•] (Oxford), J. Schwartz[•] (Chem,
 IRG-B), I. Szleifer[•] (Northwestern), D.A. Vega[•] (UNDS)

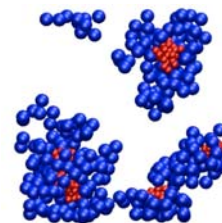
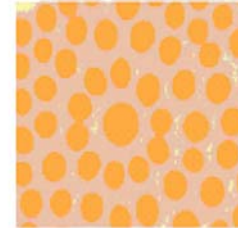
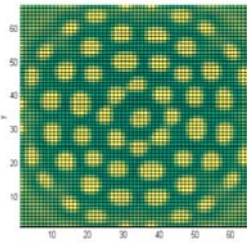
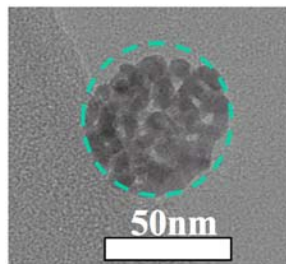


block copolymer thin films [shear]



electrically active materials [SALSA]

composite nanoparticles [rapid precipitation]



Monte Carlo, DPD, Ginzburg-Landau method