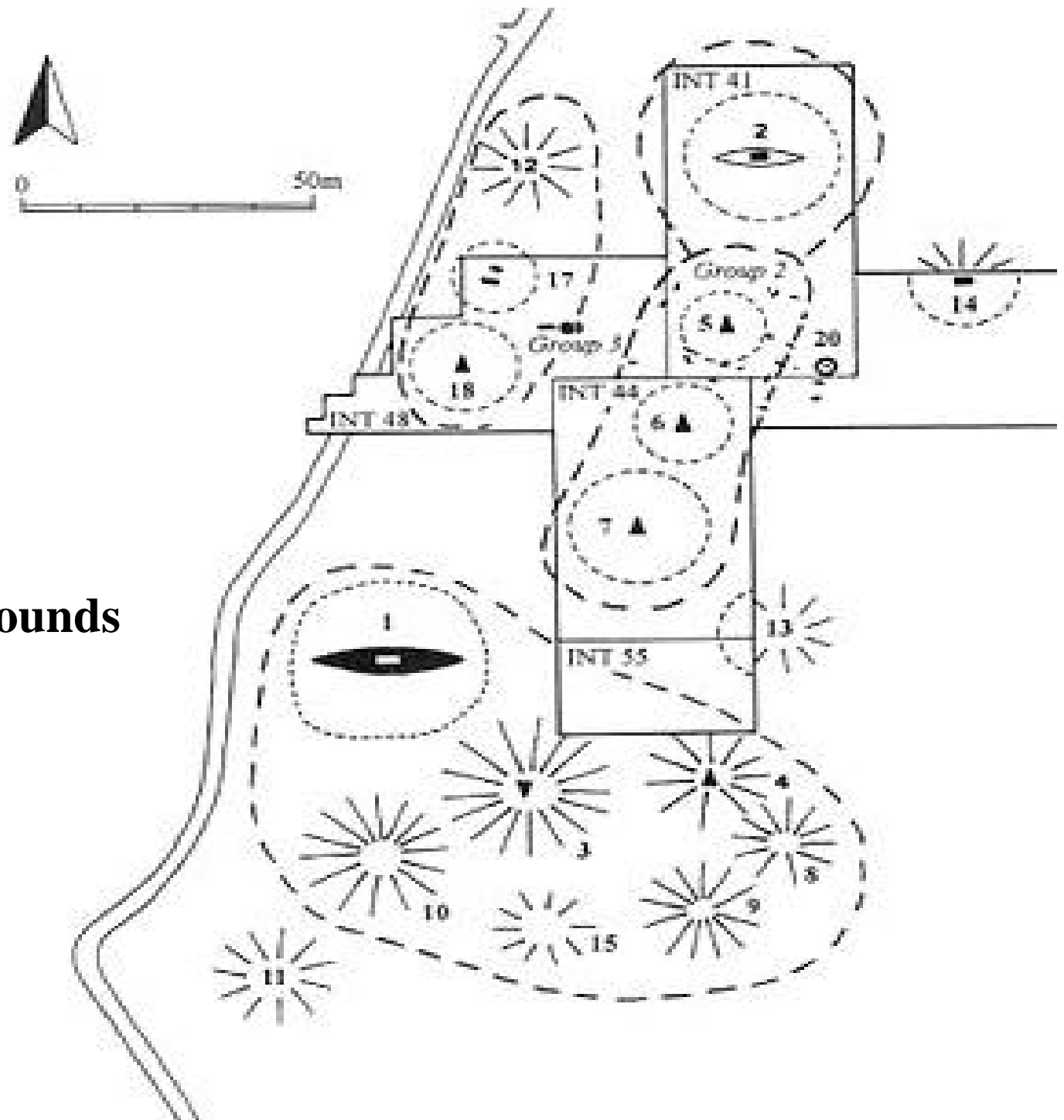


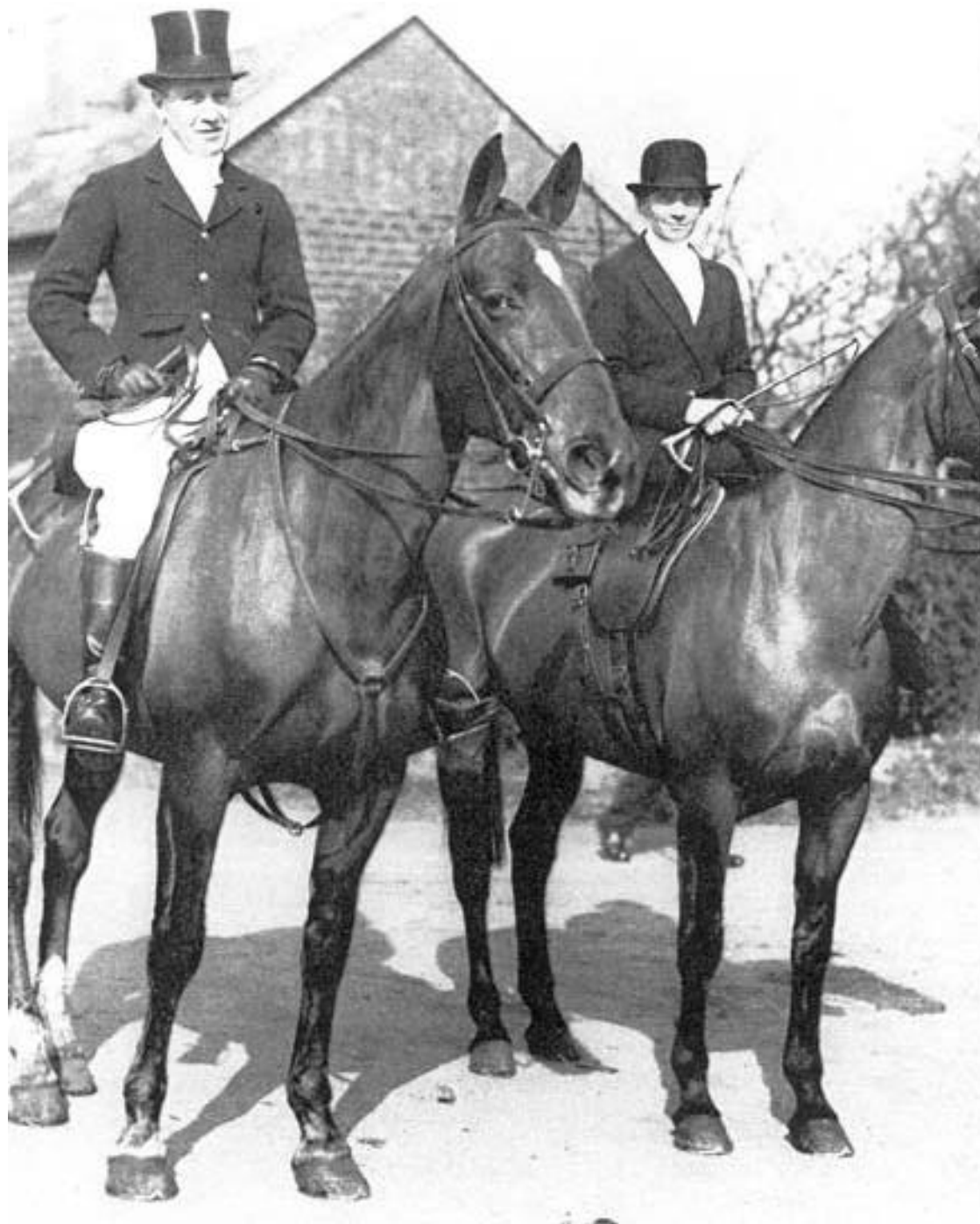
**The excavated mounds  
at Sutton Hoo.**



**A detail from the Anglo-Saxon era MS,  
Cotton Claudius B. iv, showing a gallows.**



**Col.  
Frank  
and  
Edith  
May  
D.  
Pretty  
astride.**



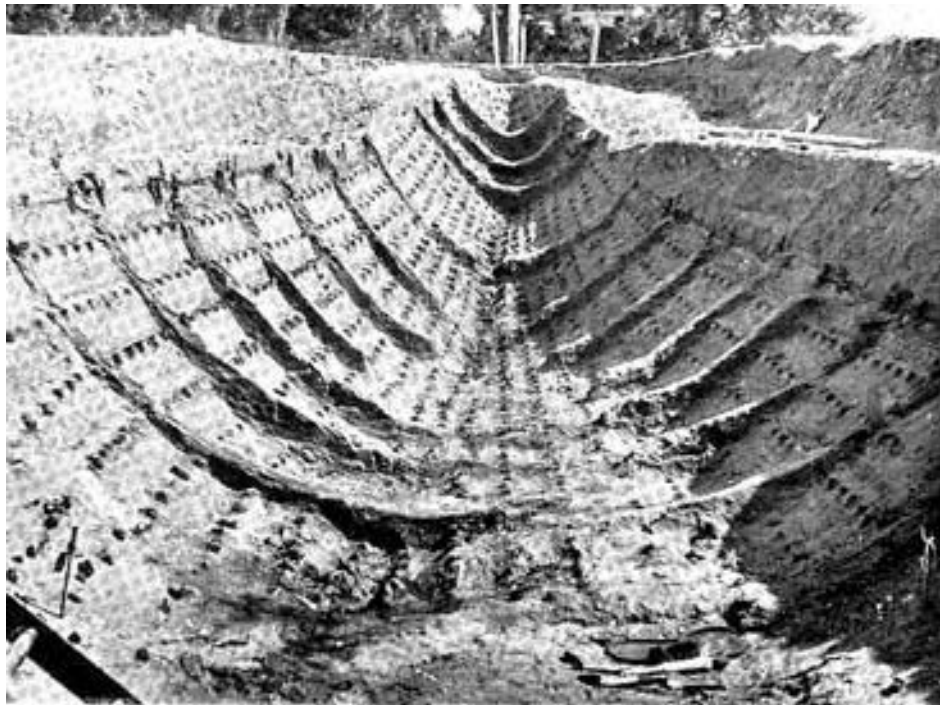
**A ship-rivet: the first find at  
Sutton Hoo.**



## **A ship emerges from Mound 1.**



**A closer view of the stern.**



**A half-scale replica of the ship from Mound 1.**



**One of a pair of  
hinged gold- and  
garnet shoulder  
clasps.**

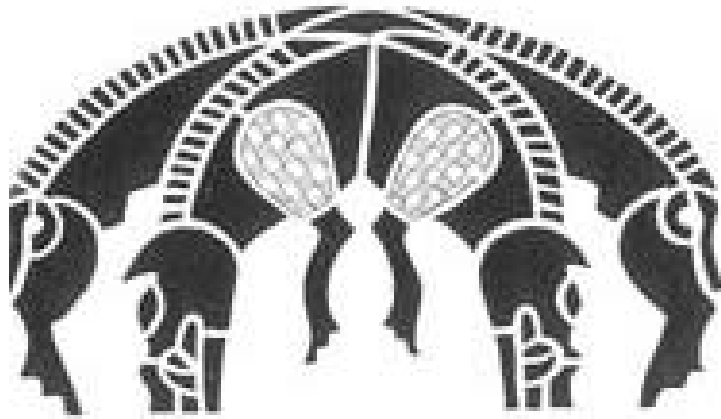




**A detail from the curved edge of the shoulder clasp.**



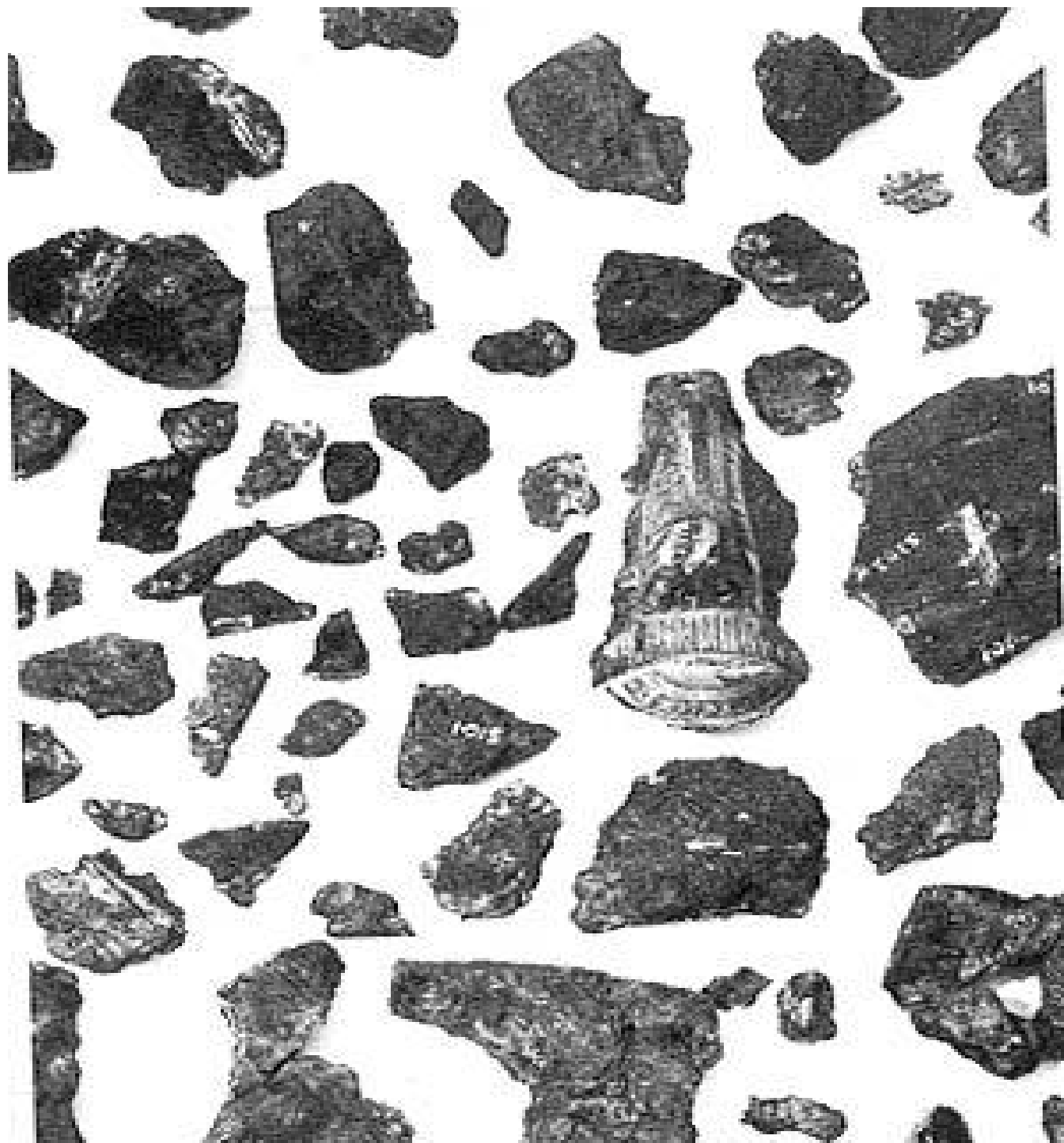
**The two interlaced boars on the edge of the shoulder clasp,  
one of three zoomorphic decorative programs on this piece.**



**The great gold buckle with its interlaced dragons.**



**Helmet  
in pieces.**



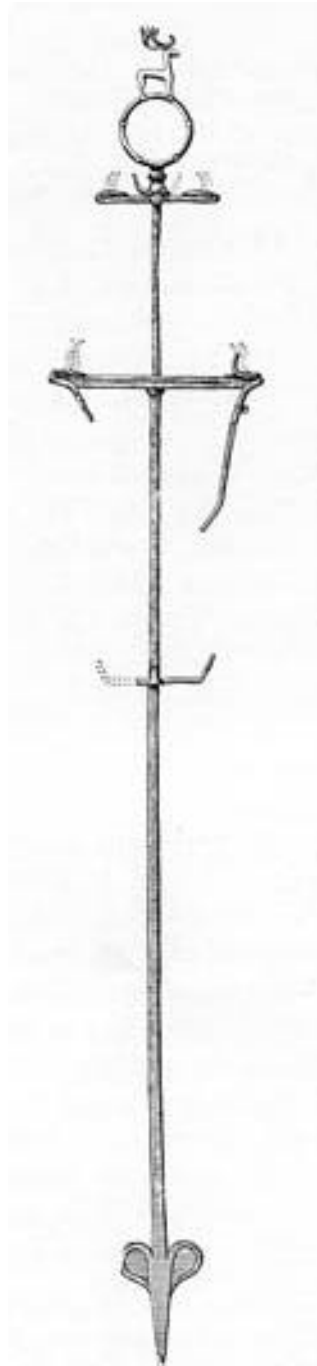
**Helmet in one piece.**



**Whetstone.**



**Standard.**



## **The hart.**

