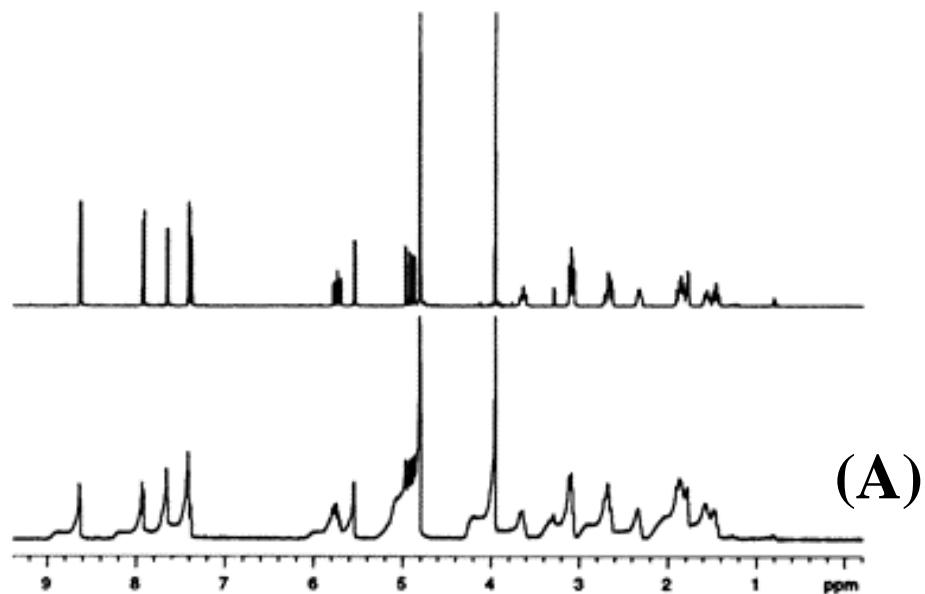


# 2H Gradient Shimming

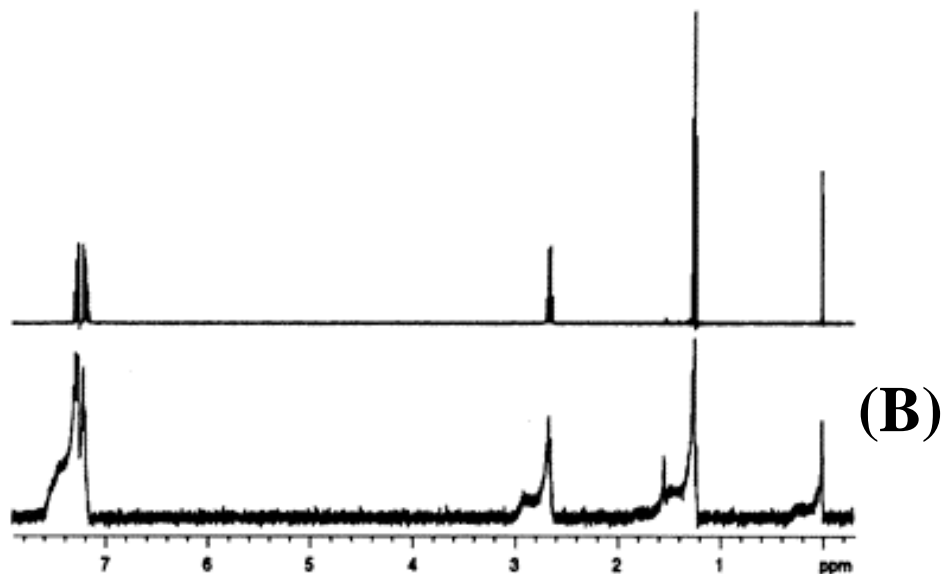


*Two panels showing before and after spectra from 2H gradient shimming.*

*The first sample*

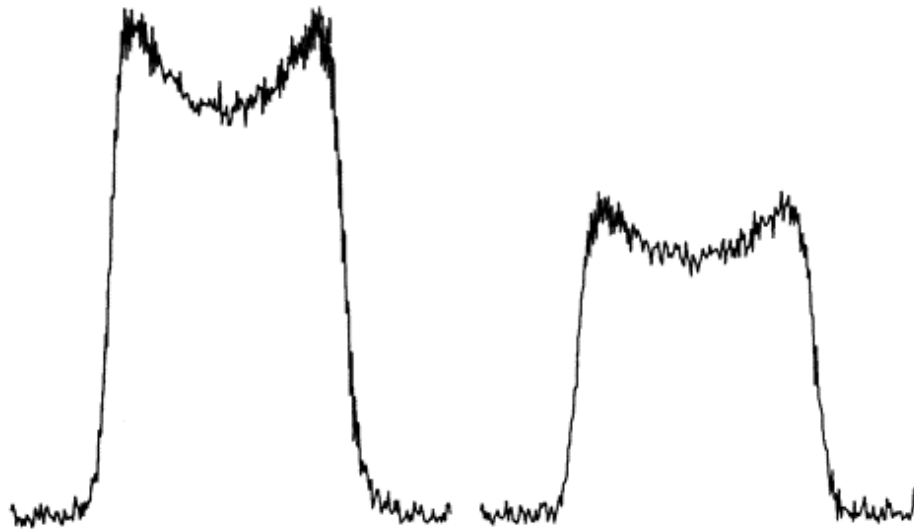
*(A) is **quinine** in CD<sub>3</sub>OD and the second*

*(B) is the standard **ethyl benzene** 1H sensitivity sample in CDCl<sub>3</sub>.*

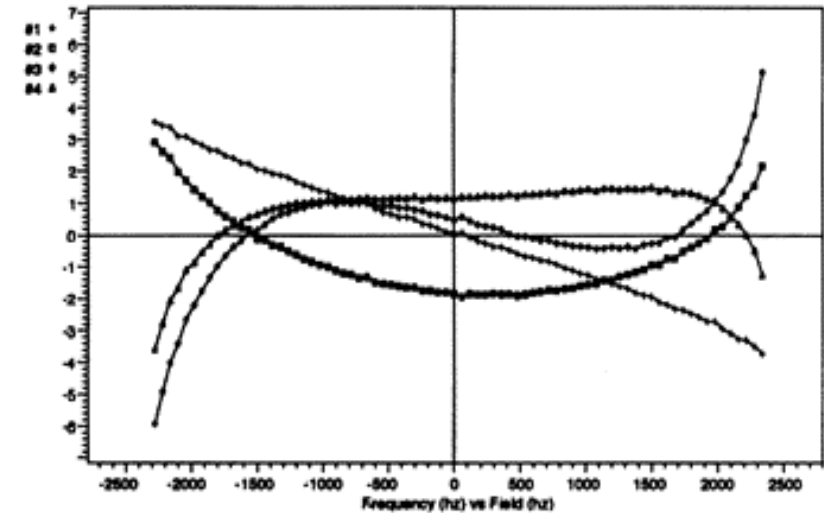
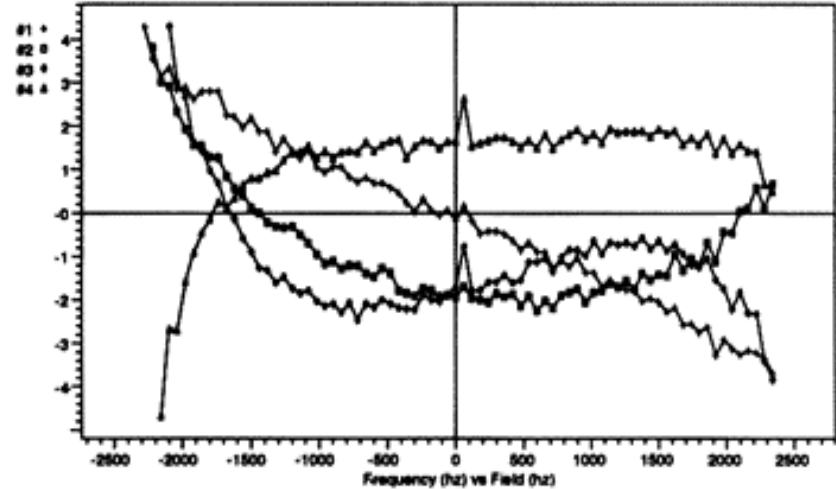


# 2H Gradient Shimming

(cont.)



Profiles obtained with at delay set to less than  $T_1$  showing "saw tooth" noise.



Gradient shim maps acquired on D2O using 1 scan and  $d1=3$  sec. The first map was acquired with  $d3=0,0.0326$ . The second map was acquired with  $d3=0,0.2$