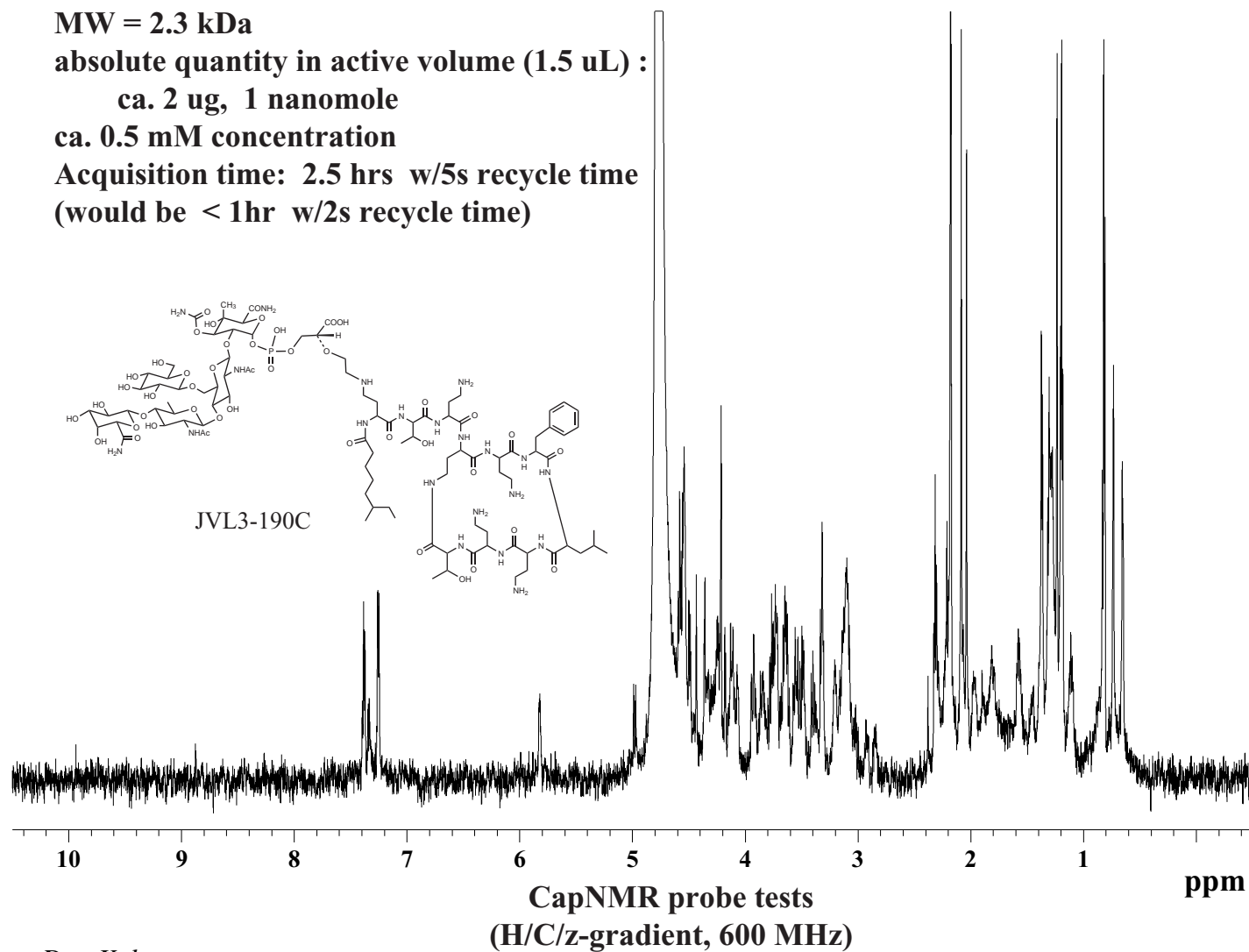
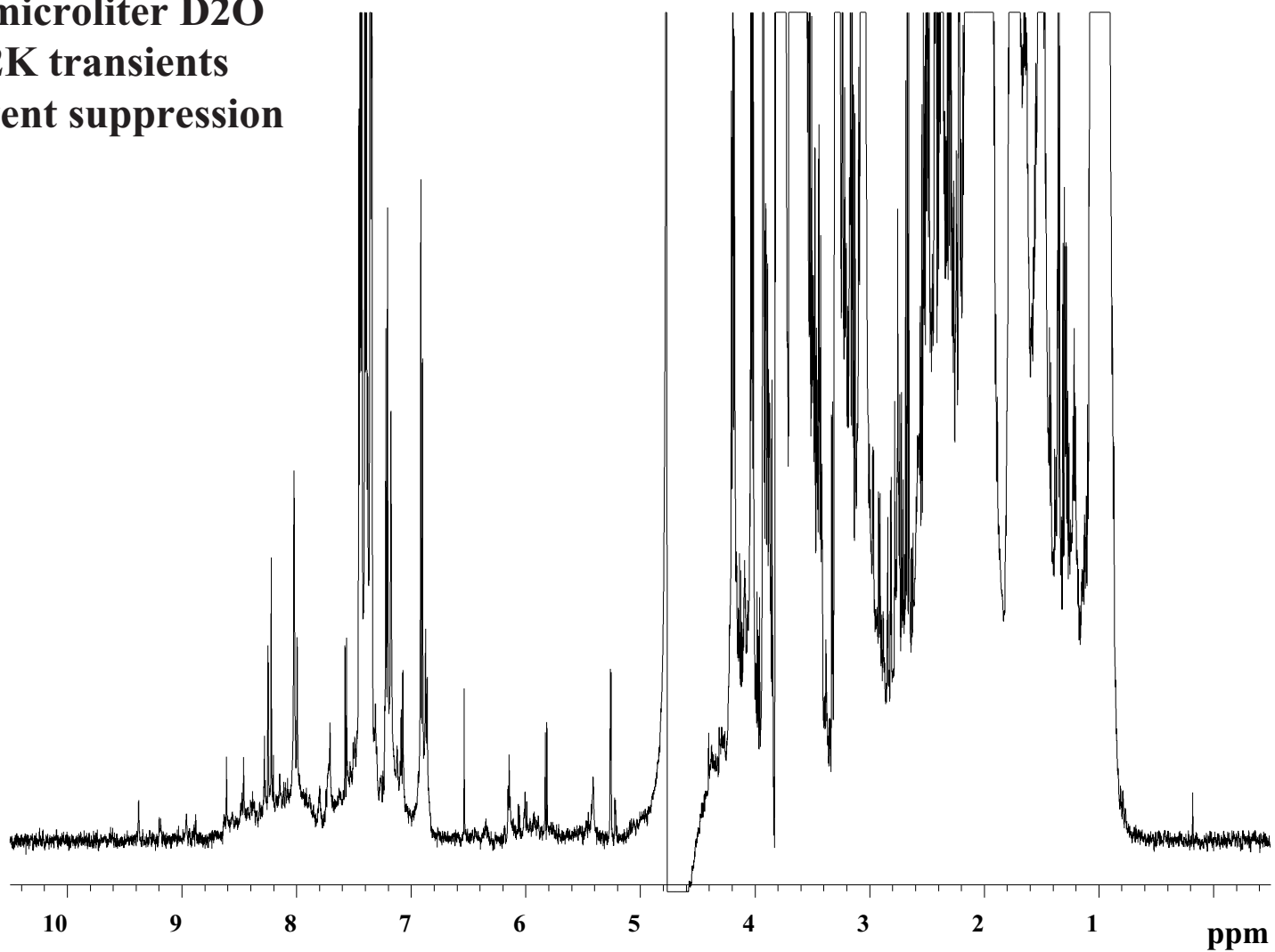


**MW = 2.3 kDa**  
**absolute quantity in active volume (1.5 uL) :**  
**ca. 2 ug, 1 nanomole**  
**ca. 0.5 mM concentration**  
**Acquisition time: 2.5 hrs w/5s recycle time**  
**(would be < 1hr w/2s recycle time)**



*John Latour, Dan Kahne*

**Cell extract  
in 10 microliter D2O  
ca. 2K transients  
ES solvent suppression**



*Bonnie Bassler, Derrick Lenz*

**CapNMR probe tests  
(H/C/z-gradient, 600 MHz)**