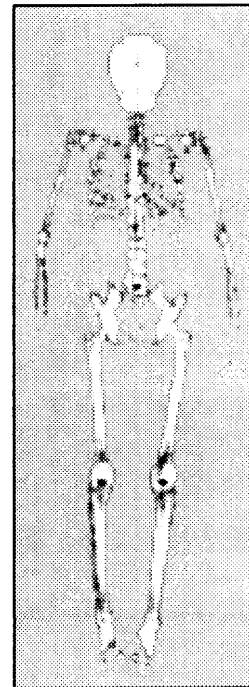


Contents

Introduction	1
Principal Findings	2
■ In-Hospital Treatment	2
Expenditures for In-Hospital Services	3
■ In-Hospital and Long-Term Mortality	3
■ Functional Impairment Following a Hip Fracture	4
■ Use and Expenditures for Post-Hospital and Other Outpatient Services	4
Comparison of OTA's Estimate with Other Estimates of the Cost of Hip Fractures	5
Sources of Data on Hip Fracture Outcomes	6
In-Hospital Treatment and Expenditures	9
■ Use and Expenditures for Hospital Care	11
■ Use and Expenditures for In-Hospital Physician Services	14
Use and Expenditures for In-Hospital Anesthesia Services	19
■ Use and Expenditures for In-Hospital Radiologic Services	20
■ Use and Expenditures for In-Hospital Physical Therapy	22
■ OTA's Estimate of Total Per Patient Expenditures for In-Hospital Services	23
In-Hospital Mortality	24
■ Factors That Affect In-Hospital Mortality	25
■ OTA's Estimate of Average In-Hospital Mortality	27
Long-Term Mortality	27
■ Factors That Affect Long-Term Mortality	28
■ OTA's Estimate of Average Long-Term Mortality	32
Post-Hospital and Other Outpatient Service Use and Expenditures	33
■ Use and Expenditures for Nursing Home Care	34
Use and Expenditures for Care in a Rehabilitation Facility or Another Short-Stay Hospital	41
Use and Expenditures for Home Care Services	43
Use and Expenditures for Physician Visits	45
■ Use and Expenditures for Outpatient Physical Therapy	47



- Use and Expenditures for Emergency Room and Ambulance Services 47
 - Use and Indirect Costs of Informal Care 49
 - OTA's Estimate of Total Per Patient Expenditures for Post-Hospital and Other Outpatient Services 50
- Long-Term Functional Impairment Following a Hip Fracture 50
- Comparison of OTA's Estimates with Other Estimates of Hip Fracture Outcomes 52
- Conclusion 56

APPENDICES

A Acknowledgments 57

B Mortality Following a Hip Fracture 59

References 83

Index 91