



Using Stata in Adroit

(v. 1.0)

Oscar Torres-Reyna

otorres@princeton.edu

November 2019

<http://www.princeton.edu/~otorres/>

Getting an account

To use software available in Adroit you need to request an account, click on the following link:

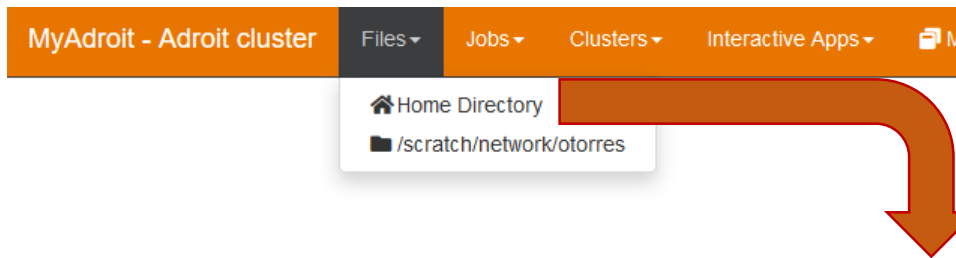
<https://forms.rc.princeton.edu/registration/?q=adroit>

For more information on Adroit, visit

<https://researchcomputing.princeton.edu/systems-and-services/available-systems/adroit>

Once you login to MyAdroit (<https://myadroit.princeton.edu/>),

go to “Files” → “Home Directory”




File Explorer

Go To... >_ Open in Terminal New File New Dir Upload Show Dotfiles Show Owner/Mode

/home/ netid/

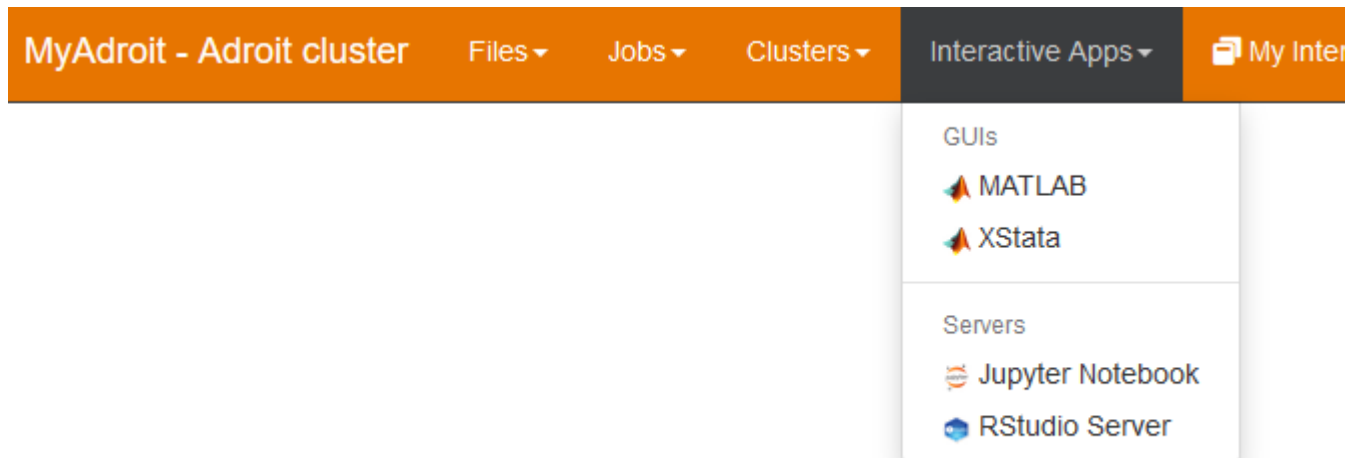
View Edit A-z Rename/Move Download Copy Paste * (Un)Select All Delete

name	size	modified date
..	<dir>	
R	<dir>	05/17/2019
ondemand	<dir>	05/17/2019



You need to upload your files first.
Software in MyAdroit won't read files
in your hard drive

After uploading all necessary data files, go back to the “Dashboard” tab in your browser, go to “Interactive Apps” and select the desired software: XStata (Stata), RStudio Server (R), Jupyter Notebook (Python), or MATLAB.



Interactive Apps

GUIs

- MATLAB
- XStata**

Servers

- Jupyter Notebook
- RStudio Server

XStata

This app will launch a XStata GUI on the [Adroit cluster](#). You will be able to interact with the XStata GUI through a VNC session.

XStata version

This defines the version of XStata you want to load.

Number of hours

Number of cores

Number of cores to allocate on the node (3.2GB per core), max 4.

Partition

- class** - Reserved for class use, please use this one.
- all** - Newer nodes but longer queue times, do not use unless you know what you are doing.

I would like to receive an email when the session starts

* The XStata session data for this session can be accessed under the [data root directory](#).

Before loading the software you need to reserve some space in the form of time and cores. The longer the time and the higher the number of cores the longer it will take to get the space.

For the number of cores, start by selecting 2 which reproduces the computing capacity of your laptop.

For time, estimate the amount of time you have for that session. If you want to process something that will take a lot of time, select as much as you can and leave it running. Session will end when time is over.

When ready click on “Launch”

Your session will be ready when you see “Launch XStata”, then click on it.


Interactive Sessions

Session was successfully created. ✕

[Home](#) / My Interactive Sessions

Interactive Apps


GUIs

 MATLAB

 XStata

Servers

 Jupyter Notebook

 RStudio Server

XStata (671900)

1 node | 2 cores | Running

Host: [>_adroit-02](#)

 Delete

Created at: 2019-11-01 15:13:45 EDT

Time Remaining: 58 minutes

Session ID: 98694669-5a1e-4c20-9410

Compression



0 (low) to 9 (high)

Image Quality

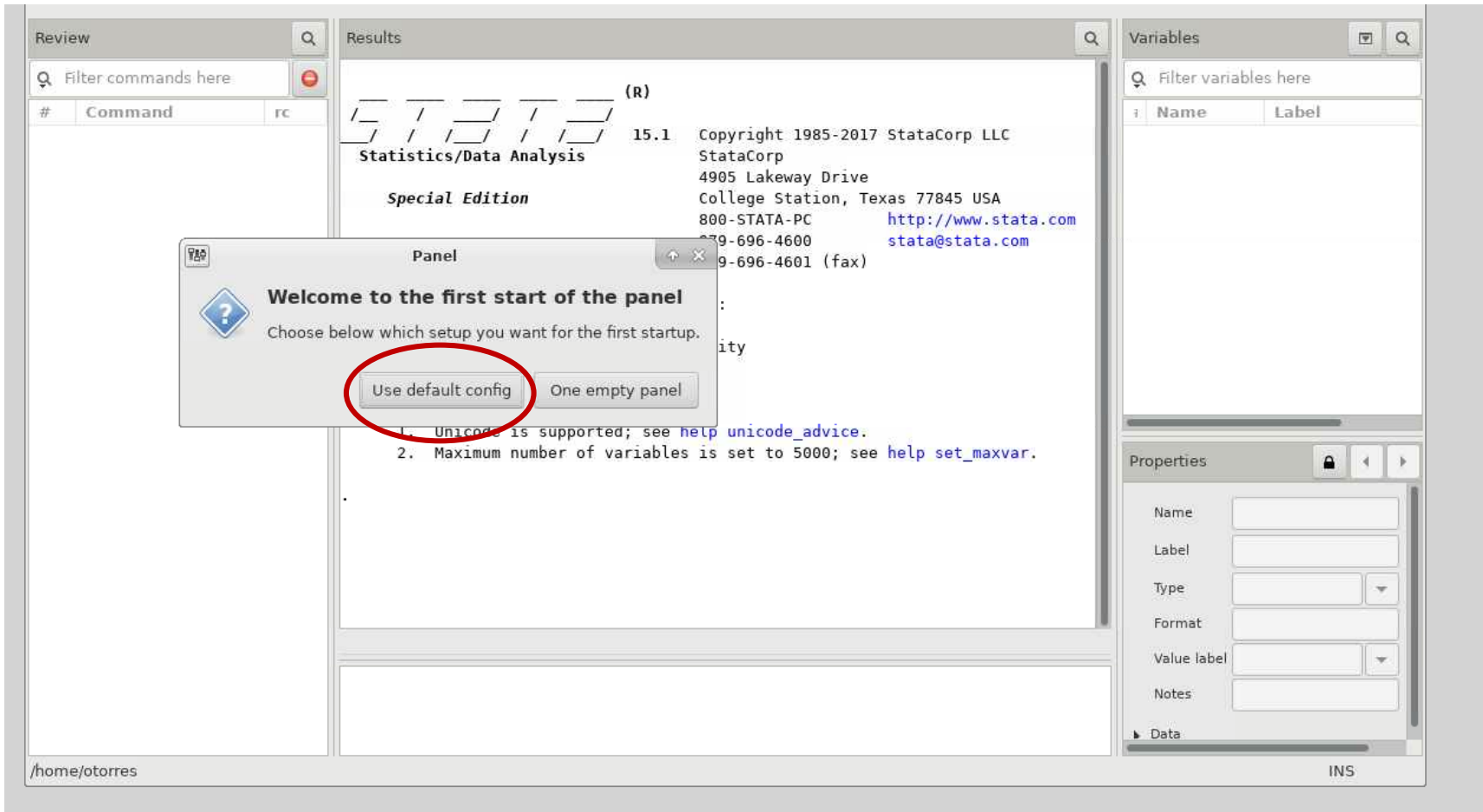


0 (low) to 9 (high)

Launch XStata

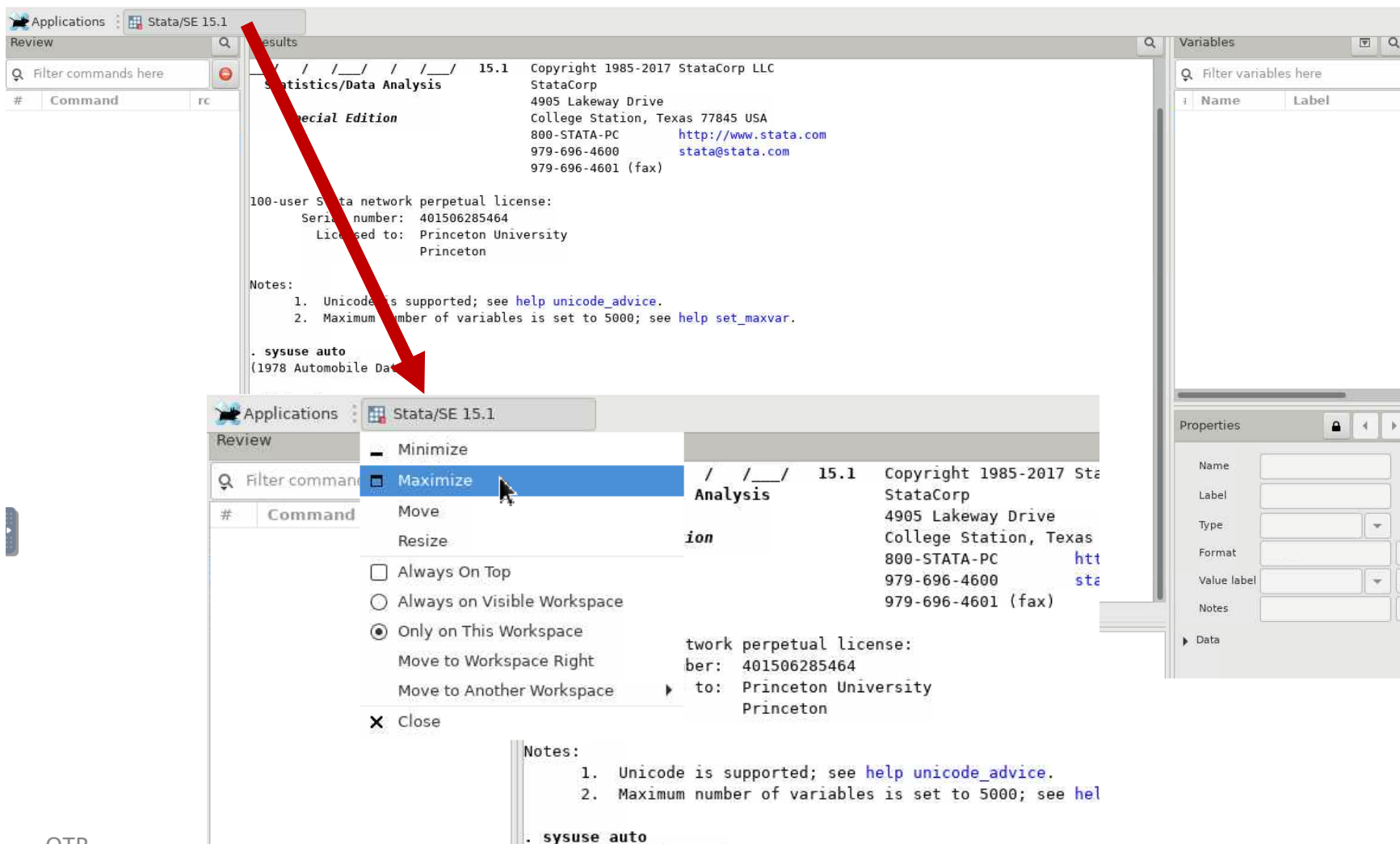
View Only (Share-able Link)

Select "Use default config"



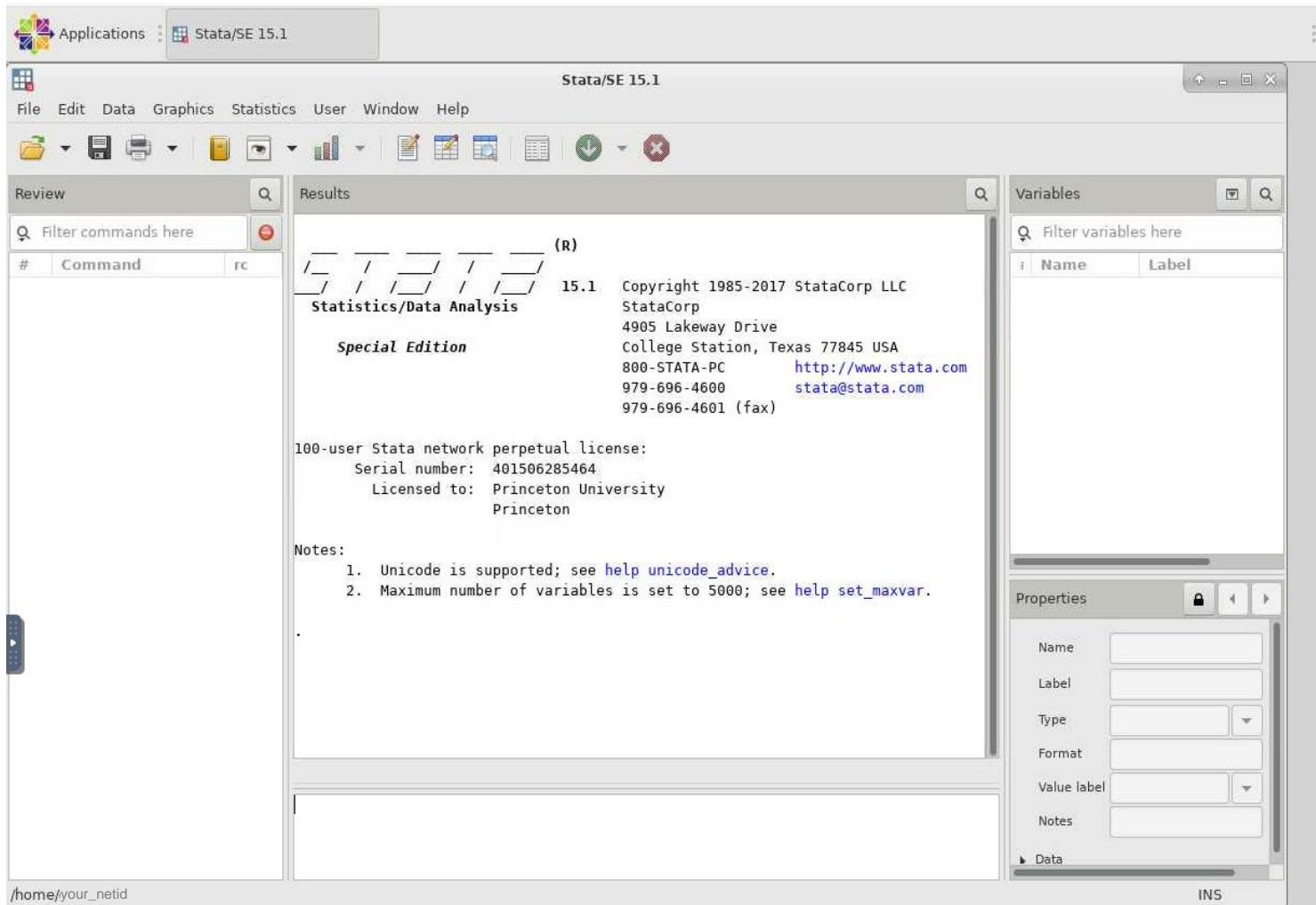
If you cannot see the menu and icons in the Stata window try one of the following:

- Right-click on the tab “Stata/SE 15.1” → Maximize.
- Press the Alt key while, at the same time, dragging the Stata screen down with the mouse.



Stata is ready to use.

Make sure to create a log file first (it will save all your commands and output), see page 7 in this tutorial <https://www.princeton.edu/~otorres/StataTutorial.pdf>



Any graph you make needs to be saved as *.png so you can insert in your document.

The screenshot shows the Stata/SE 15.1 interface. The main window displays a scatter plot of Price (y-axis, 0 to 15,000) versus Weight (lbs.) (x-axis, 2,000 to 5,000). The plot shows a positive correlation between weight and price. A red box highlights the 'Save as...' option in the context menu, and a red arrow points to the 'PNG (*.png)' option in the file format list.

Stata/SE 15.1 - /usr/licensed/stata-15.0/ado/base/a/auto.dta

File Edit Data Graphics Statistics User Window Help

Review

Filter commands here

Results

Filter variables here

Variables

Name	Label
make	Make and Model
price	Price
mpg	Mileage (mpg)
rep78	Repair Record 197
headroom	Headroom (in.)
trunk	Trunk space (cu. f
weight	Weight (lbs.)

Graph - Graph

File Edit Object Graph Tools Help

Name: Scatter1

Label:

Type:

Form:

Value:

Notes:

Data:

Save graph

Name: Scatter1

Save in folder: Please select a folder below

Places

Search

Recently Used

otorres

File System

Stata Graph (*.gph)

Stata As-is Graph (*.gph)

PDF (*.pdf)

PNG (*.png)

TIFF (*.tif)

PostScript (*.ps)

EPS with TIFF Preview (*.eps)

EPS (*.eps)

SVG (*.svg)

Hover the cursor over the graph, right-click

Graph will be saved in your Adroit home directory (go to the tab 'File Explorer' in your browser)

Keep in mind...

- Once you are done with your analysis, remember to download to your laptop any graph or output you create.
- Download is available in your home directory in the 'File Explorer' tab in your web browser.
- If you do not see your files, click on the refresh icon next to `/home/your_netid`

Support

For any Adroit related questions please contact Research Computing at:

cses@princeton.edu